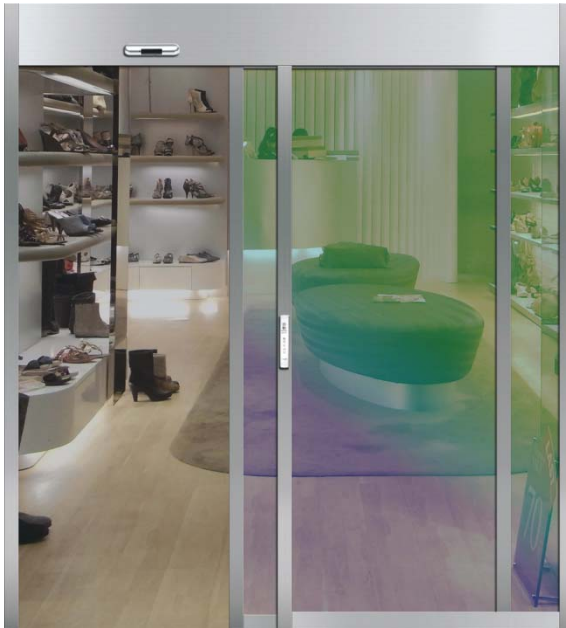
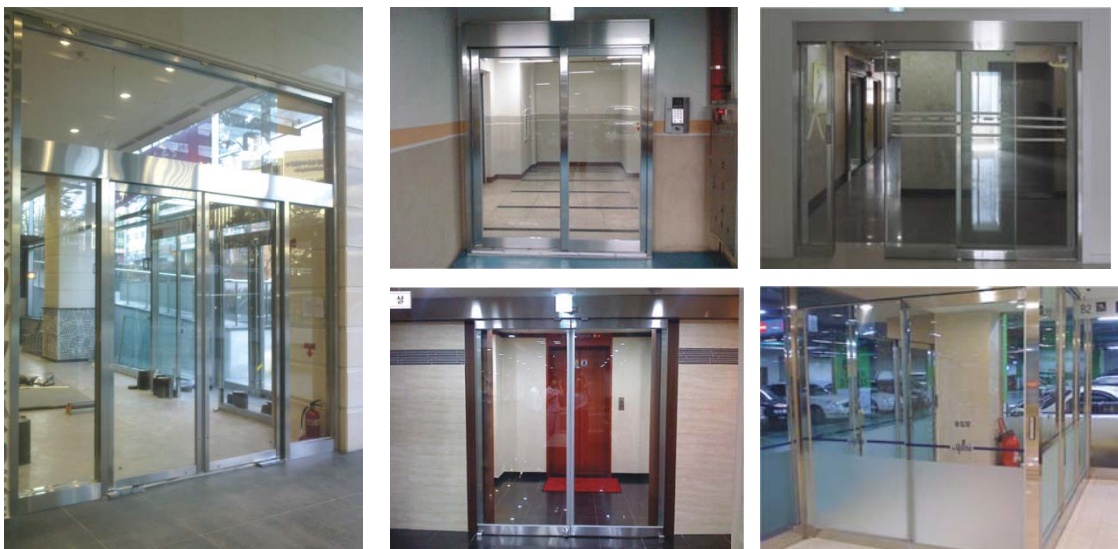


## Automatic Sliding Door



1. Complementary top-operator allows convenient delivery and receiving as well as shorten the installation time and procedures.
2. Double layer of Mohair gaskets are inserted to strengthen the insulating effects and the frame is high beneficial to fire rating.
3. At the bottom, auto seals are operated during the door closing /opening. The auto seal prevents the penetration of dusts and outside wind.
4. Non-welding assembly allows clean and fast installation . Various choices for the materials ( Color stainless steel, Aluminum sheet, Color steel sheet) are available.

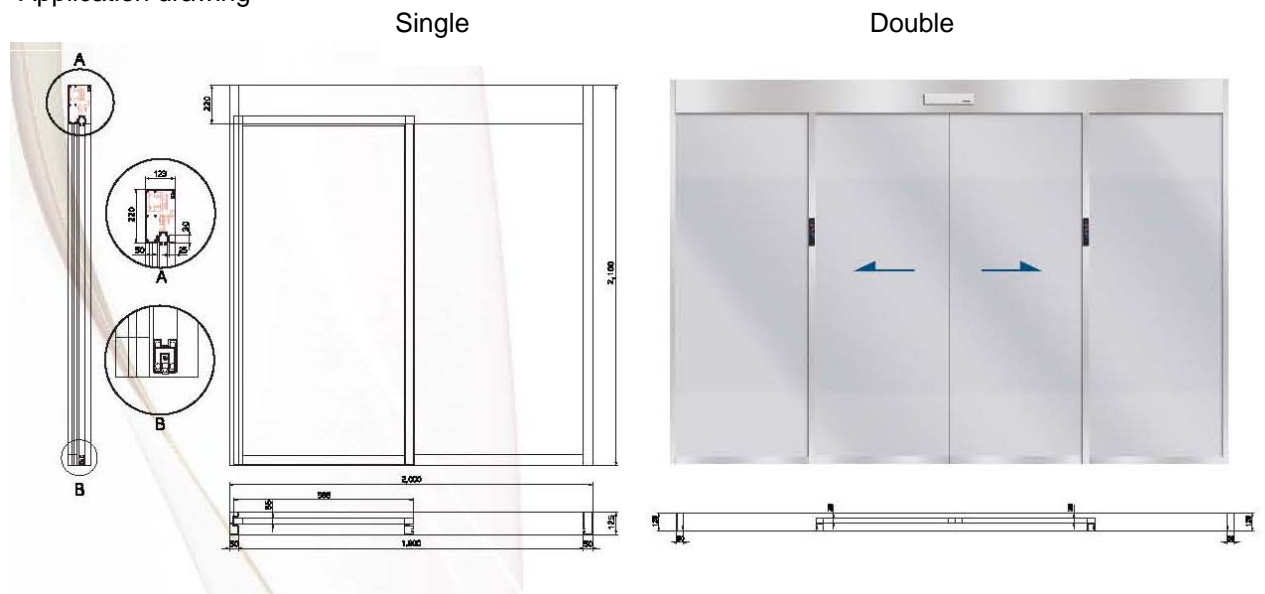
### Example of construction - Automatic Sliding Door ;



## Basic drawings – Automatic Sliding Door

Single door and Double door are basic structure. Detailed dimensions are available upon request.

Application drawing



## Application of various colored materials.

Non-welding process allows clean assembly.

Color stainless steel, color steel sheet as well as hairline stainless steel can be used.



## Structures and Functions of Operator

- **Automatic return**

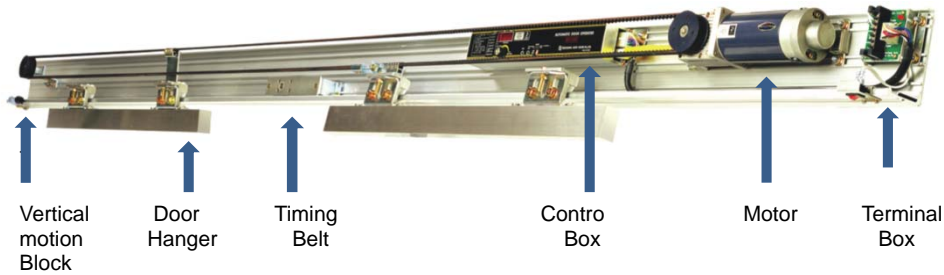
If the operation is interrupted by people or any object during its operation, the door will return/stop. It guarantees smooth and reliable operation improve the function acceptability of automatic door,

- **P.I.D (Proportional Integral Derivative ) Servo Control compensation**

PID control is adapted to keep the exact position regardless of the slip or loosened belt.

- **Open in an Emergency**

In case of events such as fire, earth quakes, power failures etc, the door will be opened automatically by back-up battery. ( Option )



- **Remarkable improvement in installation convenience**

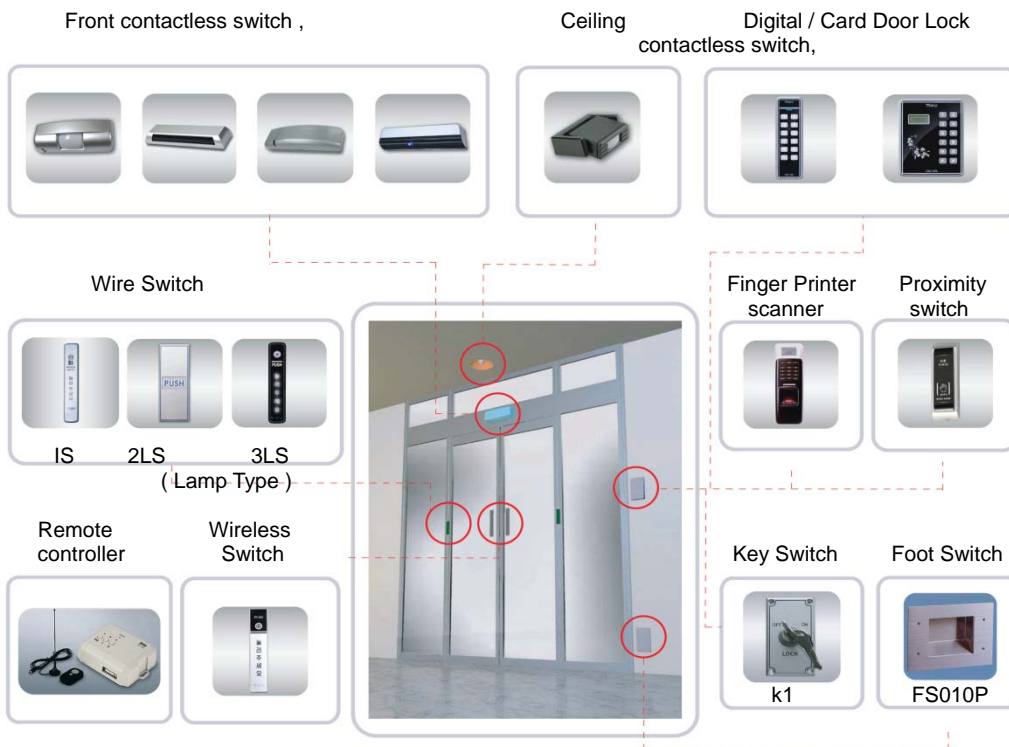
All operator position settings are possible without limitation and Installation convenience is remarkably improved by imbedding the function of the wireless touch receiver and safety beam into the control box.



- **Simple motion by remote controller**

All functions required for the operation of automatic door can be digitally set . Easy maintenance with remote controller.

- **Options ( Various switches )**

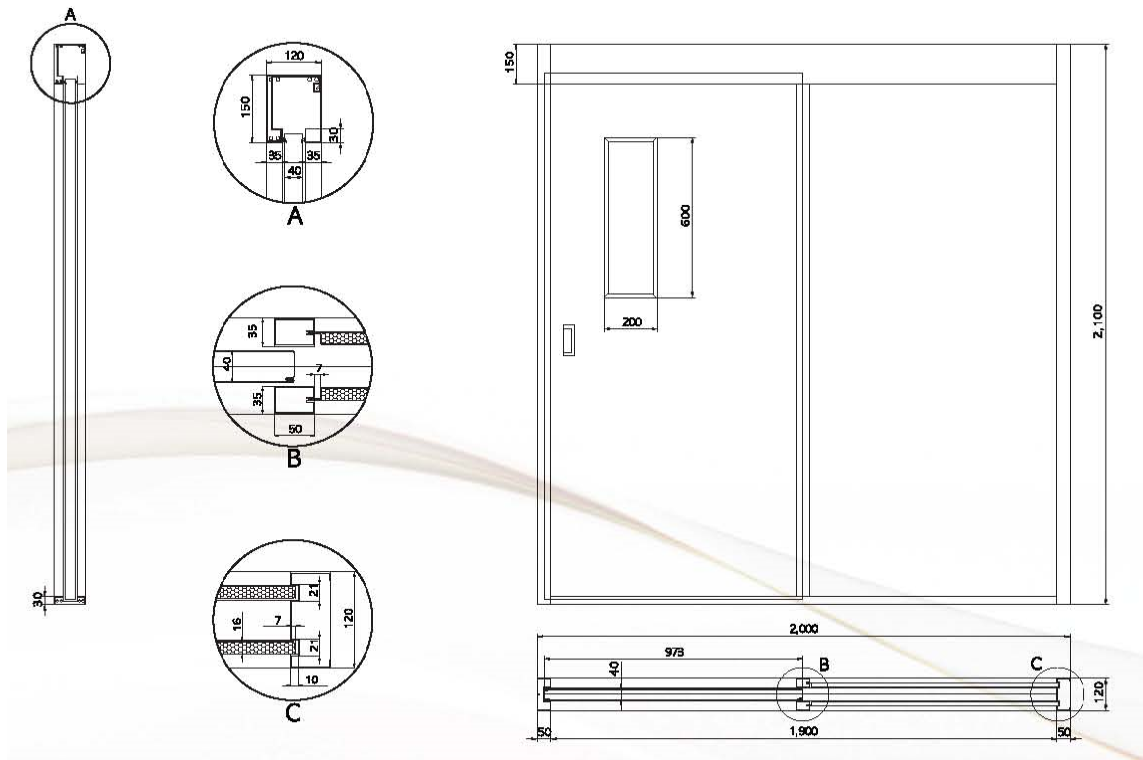


## Sliding Fire Rated Door : Automatic /Semi- automatic



1. Simple pneumatic cylinder structure allows control of speed and open/close pressure. Recommendable to the narrow space with frequent usage. Mounted Head operator is complimentary.
2. Deep frame and mohair gasket improve the insulating and fire rating as well as silence function.
3. Both frame and door are made of steel under non-welding process

### Basic Schematic Drawing

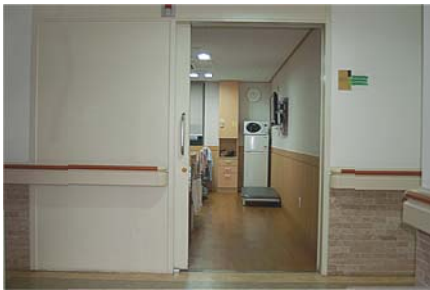
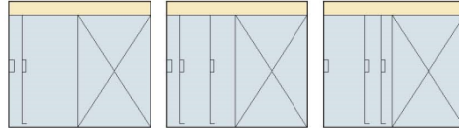


## Semi - Automatic Sliding Door



Semi-Automatic Sliding Door is using special enclosure type hydraulic cylinder and the door can be opened/closed with small force. Accordingly it does not make noise and keep silent

Closing speed can be adjusted. ( Door close direction : Right )



The door will be automatically closed once the door is opened. Easy handling and maintenance



Due to no dead space of sliding door, you can get more space by 10% compared with Swing door.

## Example Construction of Semi-Automatic sliding door.

